

Quick Start Guide

USB 3.2 Type-C to RJ45 LAN 2.5 Gbps Ethernet Adapter, Black

Model: U436-06N-2P5

Este manual está disponible en español en la página de Tripp Lite:
triplite.com

Ce manuel est disponible en français sur le site Web de Tripp Lite :
triplite.com

Русскоязычная версия настоящего руководства представлена на
веб-сайте компании Tripp Lite по адресу: triplite.com

WARRANTY REGISTRATION

Register your product today and be
automatically entered to win an ISOBAR®
surge protector in our monthly drawing!

triplite.com/warranty



1111 W. 35th Street, Chicago, IL 60609 USA • triplite.com/support

Copyright © 2021 Tripp Lite. All rights reserved.

Package Contents

- U436-06N-2P5 USB to 2.5G Ethernet Network Adapter
- Quick Start Guide

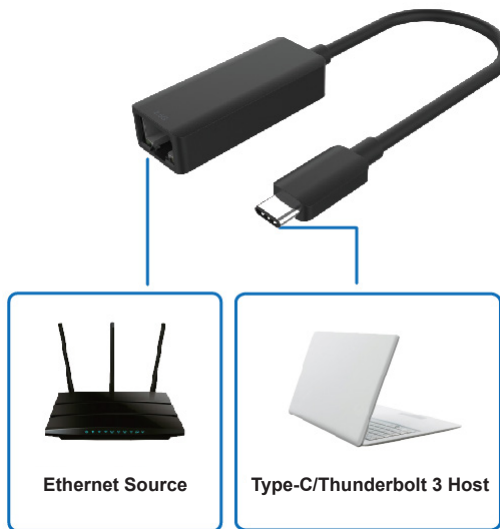
Product Features

- Supports USB Type-C Input and 2.5 Gbps RJ45 Output
- Supports USB-C plug-and-play and hot swap
- Supports 10M/100M/1G/2.5G bandwidth
- Supports twisted pair crossover detection and auto-correction
- USB bus-powered (no external power supply)
- Support wake-on-LAN (WOL), full duplex and auto-negotiation
- Supports the following operating systems:
 - Windows: Windows 8 / Windows 8 / Windows 10 / Windows Vista / Windows XP (32/64 bit)
 - Mac: macOS 10.6 to 10.12.5
 - Linux

Note: *If driver software installation is required, please download from triplite.com.*

Operation

1. Connect USB Type-C end of the U436-06N-2P5 to the USB Type-C or Thunderbolt 3 host port on your PC
2. Connect the Gigabit Ethernet port to an Ethernet router with an Ethernet cable (not included)
3. Automatically or manually set IP address of computer



Driver Installation

When the U436-06N-2P5 is connected to a Windows PC, the “auto-run” function will allow the driver to start installation.

If the Windows PC cannot automatically start the “auto-run” function, you will need to set it up manually:

1. Double-click the below icon in the File Explorer window.



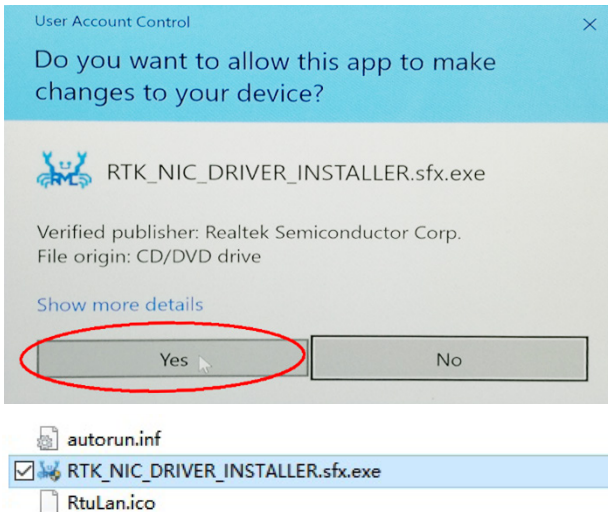
CD Drive (G:) RTL_UL

0 bytes free of 520 KB

CDFS

Driver Installation

2. Double-click the “Driver Installation” icon, then click “Yes” to finish the installation.



Specifications

Input/Output Connector	
Input	USB-C (Male)
Output	RJ45 (Female)
RJ45 Basic Specifications	
Supported Communication Rate	10 Mbps/100 Mbps/1 Gbps/2.5 Gbps
Wake On LAN	Yes
Full Duplex Flow (10M/100M/1G/2.5G Rate)	Yes
Auto-Negotiation	Yes
Size & Weight	
Dimensions (LxWxH)	2.165 x 0.846 x 0.511 in. 5.5 x 2.15 x 1.3 cm
Weight	0.044 lb. 20 g
Environmental	
Operating Temperature Range	32 to 113°F 0 to 45°C
Storage Temperature Range	14 to 158°F -10 to 70°C
Operating Humidity Range	10 to 85% RH, Non-Condensing
Storage Humidity Range	5 to 90% RH, Non-Condensing
Power Consumption	
Voltage Supported	4.75V to 5.25V
Standby Power	<60mA (When Ethernet cable is not connected)
Normal Operating Power	<250mA 10/100/1000/2500Mbps
Regulatory Approvals	
Certifications	RoHS, REACH, CE, FCC
Accessories	
Quick Start Guide	English

Warranty and Product Registration

1-Year Limited Warranty

Seller warrants this product, if used in accordance with all applicable instructions, to be free from original defects in material and workmanship for a period of one (1) year from the date of initial purchase. If the product should prove defective in material or workmanship within that period, Seller will repair or replace the product, at its sole discretion.

THIS WARRANTY DOES NOT APPLY TO NORMAL WEAR OR TO DAMAGE RESULTING FROM ACCIDENT, MISUSE, ABUSE OR NEGLIGENCE. SELLER MAKES NO EXPRESS WARRANTIES OTHER THAN THE WARRANTY EXPRESSLY SET FORTH HEREIN. EXCEPT TO THE EXTENT PROHIBITED BY APPLICABLE LAW, ALL IMPLIED WARRANTIES, INCLUDING ALL WARRANTIES OF MERCHANTABILITY OR FITNESS, ARE LIMITED IN DURATION TO THE WARRANTY PERIOD SET FORTH ABOVE; AND THIS WARRANTY EXPRESSLY EXCLUDES ALL INCIDENTAL AND CONSEQUENTIAL DAMAGES. (Some states do not allow limitations on how long an implied warranty lasts, and some states do not allow the exclusion or limitation of incidental or consequential damages, so the above limitations or exclusions may not apply to you. This warranty gives you specific legal rights, and you may have other rights which vary from jurisdiction to jurisdiction.)

WARNING: The individual user should take care to determine prior to use whether this device is suitable, adequate or safe for the use intended. Since individual applications are subject to great variation, the manufacturer makes no representation or warranty as to the suitability or fitness of these devices for any specific application.

PRODUCT REGISTRATION

Visit tripplite.com/warranty today to register your new Tripp Lite product. You'll be automatically entered into a drawing for a chance to win a FREE Tripp Lite product!*

*No purchase necessary. Void where prohibited. Some restrictions apply. See website for details.

Warranty and Product Registration

WEEE Compliance Information for Tripp Lite Customers and Recyclers (European Union)



Under the Waste Electrical and Electronic Equipment (WEEE) Directive and implementing regulations, when customers buy new electrical and electronic equipment from Tripp Lite, they are entitled to:

- Send old equipment for recycling on a one-for-one, like-for-like basis (this varies depending on the country)
- Send the new equipment back for recycling when this ultimately becomes waste

Use of this equipment in life support applications where failure of this equipment can reasonably be expected to cause the failure of the life support equipment or to significantly affect its safety or effectiveness is not recommended.

Tripp Lite has a policy of continuous improvement. Specifications are subject to change without notice. Photos and illustrations may differ slightly from actual products.



1111 W. 35th Street, Chicago, IL 60609 USA • triplite.com/support