

Owner's Manual

3-Port HDMI Switch with Remote Control, 4K x 2K

Model: B119-003-UHD

Este manual esta disponible en español en la página de Tripp Lite:
www.tripplite.com/support

Ce manuel est disponible en français sur le site Web de Tripp Lite :
www.tripplite.com/support

Русскоязычная версия настоящего руководства представлена на
веб-сайте компании Tripp Lite по адресу: www.tripplite.com/support

WARRANTY REGISTRATION

Register your product today and be automatically entered to
win an ISOBAR® surge protector in our monthly drawing!

tripplite.com/warranty



1111 W. 35th Street, Chicago, IL 60609 USA • tripplite.com/support

Copyright © 2020 Tripp Lite. All rights reserved.

Package Contents

- B119-003-UHD
- Remote Control
- External Power Supply (Input: 100–240V, 50/60 Hz, 0.3A; Output: 5V 2A)
- (4) International Plug Adapters (North America, Europe, U.K. and Australia)
- Mounting Hardware
- Owner's Manual

Optional Accessories

- P569-XXX-CERT Premium High-Speed HDMI with Ethernet Cables
- P520-006 RS-232 Serial Extension Cable

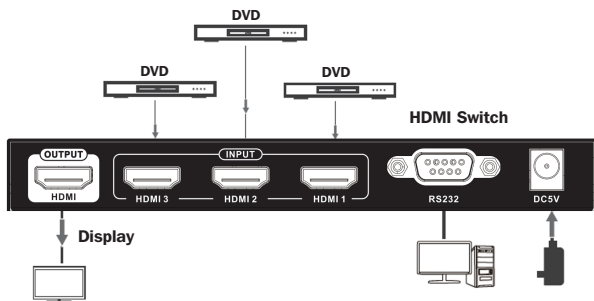
System Requirements

- Source device(s) with HDMI outputs
- Display device with HDMI input

Product Features

- Switch between three HDMI source devices (Blu-ray™ player, cable box, PC, etc.) connected to a single display
- Switch devices via push button, RS-232 port control or the included remote control
- Supports Ultra High Definition (UHD) video resolutions up to 4096 x 2160 (4K x 2K) @ 60 Hz
- Supports up to 36-bit Deep Color (12 bits per channel)
- Supports standard, DSD (Direct Stream Digital) and HD (HBR) audio
- Supports 7.1-channel surround sound, DTS-HD™ and Dolby® TrueHD audio
- Supports 300 MHz/3.4 Gbps per channel bandwidth (10.2 Gbps total)
- Meets HDCP 2.2 and HDMI 2.0 standards
- Supports 3D and EDID
- Plug-and-play operation with no software or drivers required

Standard Installation



Connection

- 1 Optional:** Attach the included mounting hardware to the unit, and mount to a desired location.
- 2** Make sure power to all devices that you will be connecting is turned off.
- 3 Optional:** Connect a DB9 cable between the RS-232 serial port on the unit and the DB9 serial port on the computer you will be using to control it.
- 4** Connect an HDMI source device to an HDMI *Input* port on the switch.
Note: The length of the HDMI cable connecting the source to the switch must not exceed 16 ft. (5 m).
- 5** Repeat step 3 to connect up to two more source devices to the remaining *Input* ports on the switch.
- 6** Connect the HDMI *Output* port on the switch to the HDMI input port of your display.
Note: The length of the HDMI cable connecting the switch to the display must not exceed 16 ft. (5 m).
- 7** Connect the external power supply to the switch. Plug it into a Tripp Lite surge protector, uninterruptible power supply (UPS) or power distribution unit (PDU). The red LED on the unit will illuminate to indicate power is being received.

Standard Installation

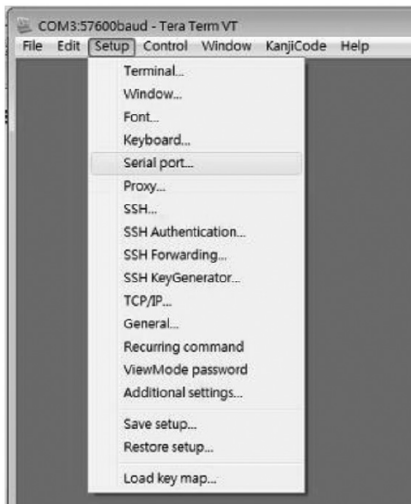
- 8 Turn on the power to the HDMI source devices and display. The blue LEDs on the unit will illuminate to indicate the signal is being received.
- 9 Switch between source devices using the *Select* push button on the unit, RS-232 serial control or the included remote control.

See the **RS-232 Serial Control** section in this manual for details on controlling the switch using Terminal Emulation Software.

RS-232 Serial Control

Before using RS-232 Serial Control, you must first go into your Terminal Emulation Software and update the COM port settings.

- 1 Go to the *Setup* dropdown menu, and select the *Serial Port* Option.



Standard Installation

- 2 Select the COM port that is being used, and update the remaining settings as follows:

Baud Rate (9600)

Data (8 bit)

Parity (none)

Stop (1 bit)

Flow Control (Xon/Xoff)

Tera Term: Serial port setup

Port: COM4

Baud rate: 9600

Data: 8 bit

Parity: none

Stop: 1 bit

Flow control: Xon/Xoff

OK

Cancel

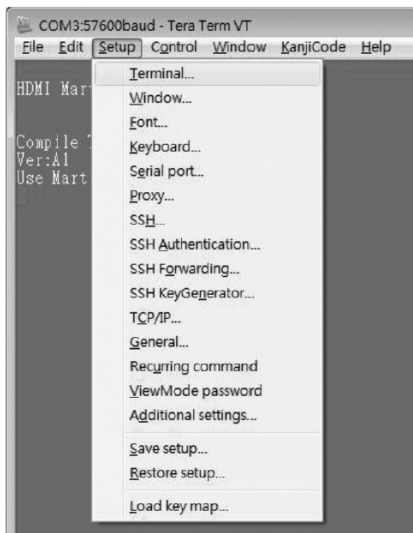
Help

Transmit delay

0 msec/char 0 msec/line

Standard Installation

- Next, you will need to configure your software to allow input control. Go to the *Setup* dropdown menu, and select the *Terminal* option.



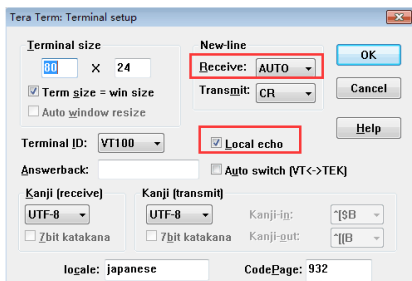
Standard Installation

- 4 Update the following settings:

Receive (AUTO)

Local Echo (enable)

The remaining settings can stay as they are.



- 5 Once these settings are updated, the Terminal Emulation Software will recognize the switch, allowing you to enter commands to control it. The following table lists the available commands. Please note that hitting the backspace key will revise a command.

Action	Command
HDMI 1 Input	port0R
HDMI 2 Input	port1R
HDMI 3 Input	port2R
Power On	poweronR
Power Off	poweroffR

Troubleshooting

If you are unable to get an acceptable image after following the installation instructions, try the troubleshooting tips:

- 1. Is the external power supply that came with the product connected and plugged into a working power source?** For the product to function properly, the switch must be connected to and receiving power from an external power supply.
- 2. Was the power to the connected devices turned off prior to installation?** If not, restart them.
- 3. What resolution are you trying to reach?** The B119-003-UHD is tested to support Ultra High Definition (UHD) video resolutions up to 4096 x 2160 @ 60 Hz and 36-bit Deep Color (12 bits per channel).
- 4. What length HDMI cable are you using?** The shorter the cable being used, the higher the resolution you will be able to obtain. If you are not able to get an acceptable image, try using a shorter cable or lowering your source's video resolution or color depth settings. See the **Installation** section in this manual for details on the maximum cable distance.
- 5. What type of cabling are you using?** Inferior cabling can result in poor performance, so it is important you use cables that can support the video resolution you are trying to obtain. It is recommended that you use Tripp Lite's P569-XXX-CERT Premium High-Speed HDMI with Ethernet cables, as they have been tested to work with the B119-003-UHD.
- 6. Test your cables to ensure they are working properly.** For example, connect your HDMI cable between a source and monitor that you know work to see if the cable is functioning.
- 7. Is the unit located in an area that exposes it to higher temperatures?** If the product is overheated, it will not function properly.
- 8.** If you are having trouble getting your Terminal Emulation Software to recognize the switch, you may need to shut down your installation and start from the beginning.
- 9.** If you are still having trouble getting your Terminal Emulation Software to recognize the switch, check to make sure your serial settings are set according to the instructions in the **RS-232 Serial Control** section of this manual

Specifications

Connectors	
Input	(3x) HDMI (Female)
Output	HDMI (Female), DB9 (Female)
Video	
Maximum Resolution	4096 x 2160 @ 60 Hz
Color Depth	36-bit Deep Color (12 bits per channel)
Video Amplifier Bandwidth	10.2 Gbps / 300 MHz
Environmental	
Operating Temperature	32° to 140°F (0° to 60°C)
Storage Temperature	-4° to 158°F (-20° to 70°C)
Relative Humidity	0% to 95%, Non-Condensing
Physical	
Unit Dimensions (H x W x D)	0.8 x 6.3 x 2.0 in. (20 x 160 x 51 mm)
Unit Weight	0.54 lb. (240 g)
Power Requirements	
External Power Supply	5V 2A
Power Consumption (Max)	5W

Warranty and Product Registration

1-Year Limited Warranty

Tripp Lite warrants its products to be free from defects in materials and workmanship for a period of one (1) year from the date of initial purchase. Tripp Lite's obligation under this warranty is limited to repairing or replacing (at its sole option) any such defective products. To obtain service under this warranty, you must obtain a Returned Material Authorization (RMA) number from Tripp Lite or an authorized Tripp Lite service center. Products must be returned to Tripp Lite or an authorized Tripp Lite service center with transportation charges prepaid and must be accompanied by a brief description of the problem encountered and proof of date and place of purchase. This warranty does not apply to equipment, which has been damaged by accident, negligence or misapplication or has been altered or modified in any way.

EXCEPT AS PROVIDED HEREIN, Tripp Lite MAKES NO WARRANTIES, EXPRESS OR IMPLIED, INCLUDING WARRANTIES OF MERCHANTABILITY AND FITNESS FOR A PARTICULAR PURPOSE. Some states do not permit limitation or exclusion of implied warranties; therefore, the aforesaid limitation(s) or exclusion(s) may not apply to the purchaser.

EXCEPT AS PROVIDED ABOVE, IN NO EVENT WILL Tripp Lite BE LIABLE FOR DIRECT, INDIRECT, SPECIAL, INCIDENTAL OR CONSEQUENTIAL DAMAGES ARISING OUT OF THE USE OF THIS PRODUCT, EVEN IF ADVISED OF THE POSSIBILITY OF SUCH DAMAGE. Specifically, Tripp Lite is not liable for any costs, such as lost profits or revenue, loss of equipment, loss of use of equipment, loss of software, loss of data, costs of substitutes, claims by third parties, or otherwise.

Product Registration

Visit www.tripplite.com/warranty today to register your new Tripp Lite product. You'll be automatically entered into a drawing for a chance to win a FREE Tripp Lite product.*

* No purchase necessary. Void where prohibited. Some restrictions apply. See website for details.

Use of this equipment in life support applications where failure of this equipment can reasonably be expected to cause the failure of the life support equipment or to significantly affect its safety or effectiveness is not recommended.

Tripp Lite has a policy of continuous improvement. Specifications are subject to change without notice. Photos and illustrations may differ slightly from actual products.



1111 W. 35th Street, Chicago, IL 60609 USA • tripplite.com/support